

NCC COMPLIANT AS5216 CONFORMING

SCREW ANCHOR HEXAGONAL HEAD

Range 6mm-10mm

Stainless Steel
External & marine applications

FEATURES & BENEFITS

- Ideal for safety critical & fire rated applications.
- Intended working life of 50 years.
- High tensile single piece anchor, cuts thread into concrete.
- ETA rating - Option 1.
- Fire rating to 120 minutes for all anchor sizes.
- Ideal for close to edge & close anchor spacing applications.
- Bi Metal construction - 316 Stainless Steel body with a hardened carbon steel thread cutting tip.

APPLICATIONS/TRADES

- Balustrading.
- Warehouse racking.
- Hand rails.
- Steel framing.
- Machinery hold down.

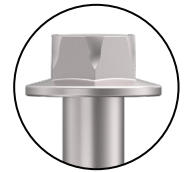
COMPLIANCE



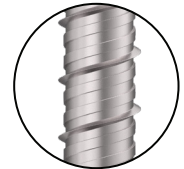
AS5216



OPTION 1
Cracked Concrete



High tensile steel for superior strength



Triple Hi-Lo thread for improved tensile performance

300 series Stainless Steel for ultimate corrosion protection



Tapered tip for simpler installation

**STAINLESS
STEEL**

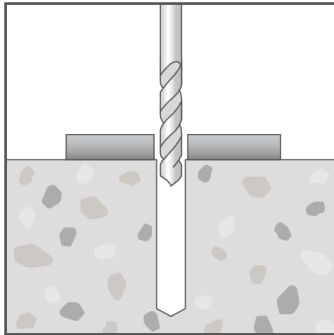
SCREW ANCHOR HEXAGONAL HEAD NCC COMPLIANT | AS5216 CONFORMING

RANGE

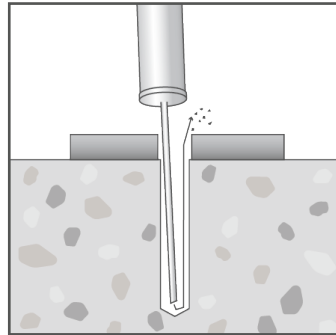
Product Code	Pack Qty	ETA Cert'n level	Anchor length (mm)	Drill hole Ø (mm)	Drill hole depth** (mm) @ t _{fix, max}	Minimum concrete thickness* (mm)	Maximum fixture thickness* (mm)	Fixture clearance hole Ø (mm)
			l_t	d_o	h_1	h_{min}	$t_{fix, max}$	d_f
ASBM606080ETA	50	Option 1	80	6	50	100	40	9
ASBM608075ETA	50	Option 1	75	8	60	100	25	12
ASBM608090ETA	50	Option 1	90				40	
ASBM610100ETA	20	Option 1	100	10	85	105	30	14
ASBM610120ETA	20	Option 1	120				50	

Note: * For a fixture thickness (t_{fix}) that is less than the $t_{fix, max}$ value tabled above:
 - increase both the drill hole depth (h_1) & concrete thickness (h_{min}) by ($t_{fix, max} - t_{fix}$ actual)

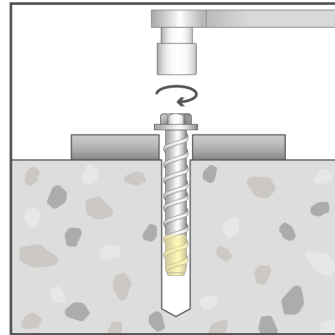
INSTALLATION



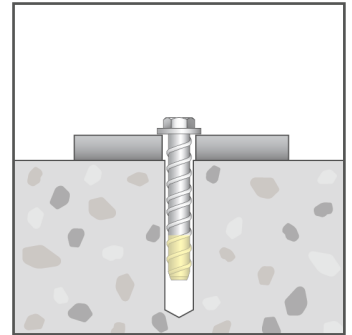
Drill hole through fixture into substrate to the specified diameter and depth.



Clear hole of drilling debris.



Insert anchor into hole and screw in using spanner, socket or an impact wrench. Apply constant forward pressure when driving and tighten to the specified torque.



Use hand tools when removing the anchor. Do not remove with power tools if resetting the anchor.

SCREW ANCHOR HEXAGONAL HEAD NCC COMPLIANT | AS5216 CONFORMING

PRODUCT INSTALL & PERFORMANCE INFORMATION

Product Code	Anchor length (mm)	Maximum fixture thickness (mm)	Drill hole depth @ t _{fix, max} (mm)	Minimum embedment depth (mm)	Socket size AF (mm)	Installation torque (Nm)	Design capacities	
							Uncracked concrete - tension (kN)	Uncracked concrete - shear (kN)
	l _t	t _{fix, max}	h ₁	h _{nom}	SW	T _{inst}	N _{Rd,ucr}	V _{Rd,ucr}
ASBM606080ETA	80	40	50	40	10	15	3.8	6.2
ASBM608075ETA	75	25	60	50	13	25	7.4	10.7
ASBM608090ETA	90	40				25	7.4	10.7
ASBM610100ETA	100	30	85	70	15	50	12.3	14.9
ASBM610120ETA	120	50				50	12.3	14.9

Note: Concrete cylinder compressive strength = 32MPa.
 Single anchor capacity - no nearby edge, minimum recommended concrete thickness.
 For combined load cases (tension & shear) - must also comply with $(N^* / N_{Rd}) + (V^* / V_{Rd}) \leq 1.2$.

Important Disclaimer: Product performance information contained herein is based on ETA certificate data and AS5216:2021 inputs as appropriate. Capacity information is limited to very simple load case configurations and is provided to enable a relative comparison within and across product ranges. The design of an anchoring solution for a particular application should be conducted by an appropriately qualified design professional.