

NCC COMPLIANT AS5216 CONFORMING

SCREW ANCHOR COUNTERSUNK HEAD

Range 6mm-10mm

Ceramic Coated
Damp, external applications

FEATURES & BENEFITS

- Ideal for safety critical & fire rated applications.
- Intended working life of 50 years.
- High tensile single piece anchor, cuts thread into concrete.
- ETA rating - from Option 1 up to Seismic C2*.
- Fire rating to 120 minutes for all anchor sizes.

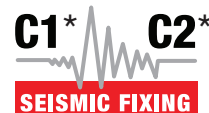
APPLICATIONS/TRADES

- Public space fixings.
- Outdoor public seating.
- Hand rails.
- Steel framing.
- Machinery hold down.

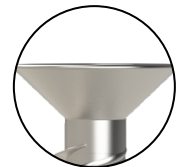
COMPLIANCE



AS5216



* Refer to Range table for line specific approval levels



Torx drive for reliable anchor setting



Triple Hi-Lo thread for improved tensile performance



Tapered tip for simpler installation



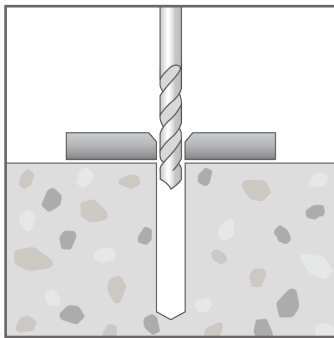
SCREW ANCHOR COUNTERSUNK HEAD NCC COMPLIANT | AS5216 CONFORMING

RANGE

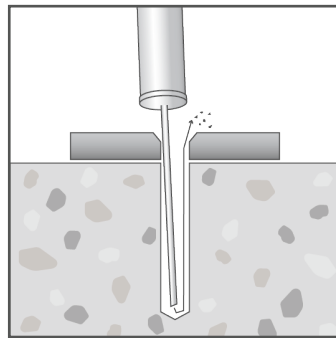
Product Code	Pack Qty	ETA Cert'n level	Anchor length (mm)	Drill hole Ø (mm)	Drill hole depth** (mm) @ t _{fix, max}	Minimum concrete thickness** (mm)	Maximum fixture thickness** (mm)	Fixture clearance hole Ø (mm)
ASBKR06052ETA	100	Seismic C1	52	6	50	100	12	9
ASBKR06072ETA	100	Seismic C1	72				32	
ASBKR08065ETA	100	Option 1*	65	8	60	100	15	12
ASBKR08075ETA	100	Option 1*	75				25	
ASBKR08090ETA	100	Seismic C1 & C2	90		30			
ASBKR10070ETA	50	Option 1	70	10	70	100	10	14
ASBKR10080ETA	50	Option 1	80				20	
ASBKR10100ETA	50	Seismic C1 & C2	100		100		130	

Note: * Seismic C1 & C2 ratings available for this anchor with increased embedment depth - contact Bremick for details
 ** For a fixture thickness (t_{fix}) that is less than the $t_{fix, max}$ value tabled above:
 - increase both the drill hole depth (h_1) & concrete thickness (h_{min}) by ($t_{fix, max} - t_{fix}$ actual)

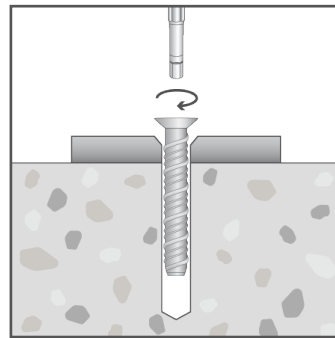
INSTALLATION



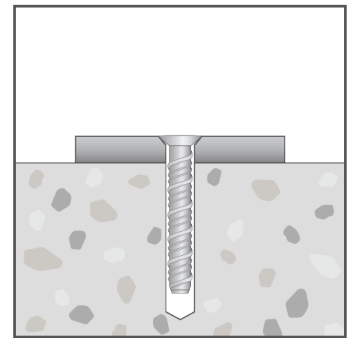
Drill hole through fixture into substrate to the specified diameter and depth.



Clear hole of drilling debris.



Insert anchor into hole and screw in using hand or power tool to drive Torx driver bit. Apply constant forward pressure when driving and tighten to the specified torque.



Use hand tools when removing the anchor. Do not remove with power tools if resetting the anchor.

SCREW ANCHOR COUNTERSUNK HEAD NCC COMPLIANT | AS5216 CONFORMING

PRODUCT INSTALL & PERFORMANCE INFORMATION

Product Code	Anchor length (mm)	Maximum fixture thickness (mm)	Drill hole depth @ t _{fix, max} (mm)	Minimum embedment depth (mm)	Driver bit size	Installation torque (Nm)	Design Capacities	
							Uncracked concrete - tension (kN)	Uncracked concrete - shear (kN)
							N _{Rd,ucr}	V _{Rd,ucr}
	l _t	t _{fix, max}	h ₁	h _{nom}	H	T _{inst}		
ASBKR06052ETA	52	12	50	40	T30	15	3.8	6.2
ASBKR06072ETA	72	32					3.8	6.2
ASBKR08065ETA	65	15	60	50	T45	25	7.4	10.7
ASBKR08075ETA	75	25					7.4	10.7
ASBKR08090ETA	90	30					10.0	12.0
ASBKR10070ETA	70	10	70	60	T45	50	9.7	11.6
ASBKR10080ETA	80	20					9.7	11.6
ASBKR10100ETA	100	15	100	85			12.4	14.9

Note: Concrete cylinder compressive strength = 32MPa.
 Single anchor capacity - no nearby edge, minimum recommended concrete thickness.
 For combined load cases (tension & shear) - must also comply with $(N^* / N_{Rd}) + (V^* / V_{Rd}) \leq 1.2$.

Important Disclaimer: Product performance information contained herein is based on ETA certificate data and AS5216:2021 inputs as appropriate. Capacity information is limited to very simple load case configurations and is provided to enable a relative comparison within and across product ranges. The design of an anchoring solution for a particular application should be conducted by an appropriately qualified design professional.