

NCC COMPLIANT AS5216 CONFORMING

SCREW ANCHOR HEXAGONAL HEAD

Range 6mm-12mm

Zinc Plated
Dry, internal applications

FEATURES & BENEFITS

- Ideal for safety critical & fire rated applications.
- Intended working life of 50 years.
- High tensile single piece anchor, cuts thread into concrete.
- ETA rating - from Option 1 up to Seismic C2.
- Fire rating to 120 minutes for all anchor sizes.
- Ideal for close to edge & close anchor spacing applications.

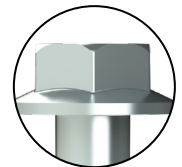
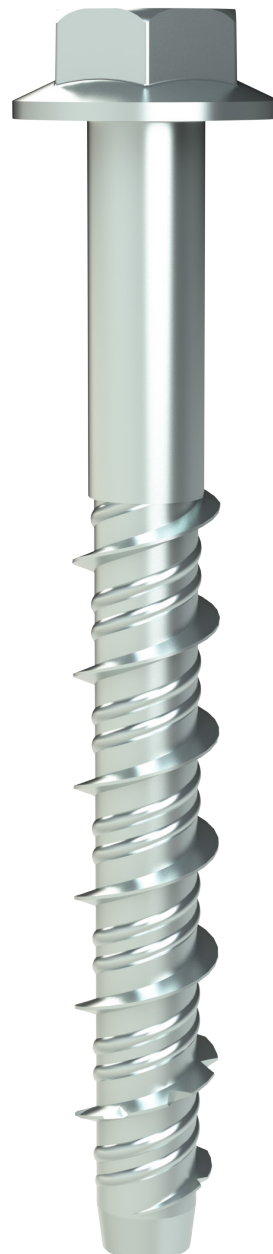
APPLICATIONS/TRADES

- Timber bottom plate hold down.
- Warehouse racking.
- Hand rails.
- Steel framing.
- Machinery hold down.

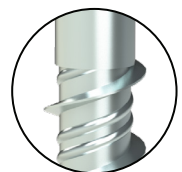
COMPLIANCE



AS5216



High tensile steel for superior strength



Triple Hi-Lo thread for improved tensile performance



Tapered tip for simpler installation



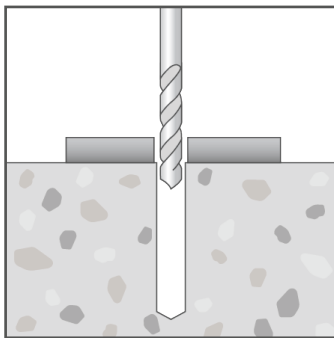
SCREW ANCHOR HEXAGONAL HEAD NCC COMPLIANT | AS5216 CONFORMING

RANGE

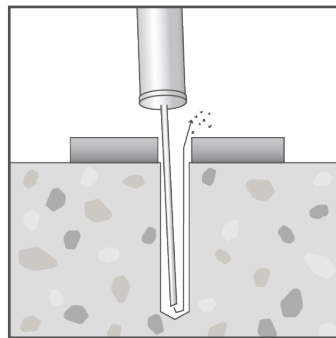
SAFETY Code	Pack Qty	ETA Cert'n level	Anchor length (mm)	Drill hole Ø (mm)	Drill hole depth (mm) @ t _{fix, max}	Minimum concrete thickness (mm)	Maximum fixture thickness (mm)	Fixture clearance hole Ø (mm)
			l _t	d _o	h ₁	h _{min}	t _{fix, max}	d _f
ASBMZ06045ETA	100	C1	45	6	50	100	5	9
ASBMZ06060ETA	100	C1	60				20	
ASBMZ06080ETA	100	C1	80				40	
ASBMZ06100ETA	100	C1	100				60	
ASBMZ08055ETA	100	Option 1	55	8	60	100	5	12
ASBMZ08065ETA	100	Option 1*	65				15	
ASBMZ08075ETA	100	Option 1*	75				25	
ASBMZ08110ETA	100	Option 1*	110				60	
ASBMZ10065ETA	50	Option 1	65	10	75	100	5	14
ASBMZ10075ETA	50	Option 1	75				15	
ASBMZ10100ETA	50	Option 1*	100				40	
ASBMZ10120ETA	50	Option 1*	120				60	
ASBMZ10140ETA	20	Option 1*	140				80	
ASBMZ12090ETA	50	Option 1	90	12	90	120	15	16
ASBMZ12110ETA	50	Option 1	110				35	
ASBMZ12150ETA	20	Option 1*	150				75	

Note: * Seismic C2 rating available for this anchor with increased embedment depth
 For a fixture thickness (t_{fix}) that is less than the t_{fix,max} value tabled above:
 - increase both the drill hole depth (h₁) & concrete thickness (h_{min}) by (t_{fix,max} - t_{fix} actual)

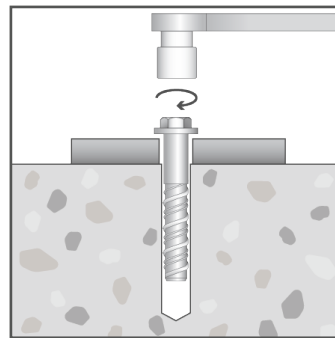
INSTALLATION



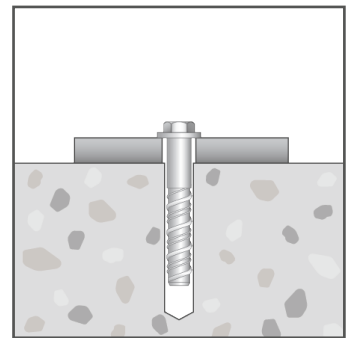
Drill hole through fixture into substrate to the specified diameter and depth



Clear hole of drilling debris.



Insert anchor into hole and screw in using spanner, socket or an impact wrench. Apply constant forward pressure when driving and tighten to the specified torque.



Use hand tools when removing the anchor. Do not remove with power tools if resetting the anchor.

SCREW ANCHOR HEXAGONAL HEAD NCC COMPLIANT | AS5216 CONFORMING

SAFETY INSTALL & PERFORMANCE INFORMATION

SAFETY Code	Anchor length (mm)	Maximum fixture thickness (mm)	Drill hole depth @ t _{fix, max} (mm)	Minimum concrete thickness (mm)	Socket size AF (mm)	Installation torque (Nm)	Design Capacities	
							Uncracked concrete - tension (kN)	Uncracked concrete - shear (kN)
							N _{Rd}	V _{Rd}
	I _t	t _{fix, max}	h ₁	h _{min}	SW	T _{inst}		
ASBMZ06045ETA	45	5	50	100	10	15	3.9	7.4
ASBMZ06060ETA	60	20						
ASBMZ06080ETA	80	40						
ASBMZ06100ETA	100	60	60	100	13	25	7.8	13.0
ASBMZ08055ETA	55	5						
ASBMZ08065ETA	65	15						
ASBMZ08075ETA	75	25						
ASBMZ08110ETA	110	60						
ASBMZ10065ETA	65	5	75	100	15	50	10.1	20.5
ASBMZ10075ETA	75	15						
ASBMZ10100ETA	100	40						
ASBMZ10120ETA	120	60						
ASBMZ10140ETA	140	80						
ASBMZ12090ETA	90	15	90	120	16	60	14.7	32.2
ASBMZ12110ETA	110	35						
ASBMZ12150ETA	150	75						

Note: Concrete cylinder compressive strength = 32MPa.
 Single anchor capacity - no nearby edge, minimum recommended concrete thickness.
 For combined load cases (tension & shear) - must also comply with $(N^* / N_{Rd}) + (V^* / V_{Rd}) \leq 1.2$.

Important Disclaimer: SAFETY performance information contained herein is based on ETA certificate data and AS5216:2021 inputs as appropriate. Capacity information is limited to very simple load case configurations and is provided to enable a relative comparison within and across SAFETY ranges. The design of an anchoring solution for a particular application should be conducted by an appropriately qualified design professional.