

NCC COMPLIANT AS5216 CONFORMING

SAFETY ANCHOR COUNTERSUNK HEAD

Range M6 - M12

Zinc Plated
Dry, internal applications

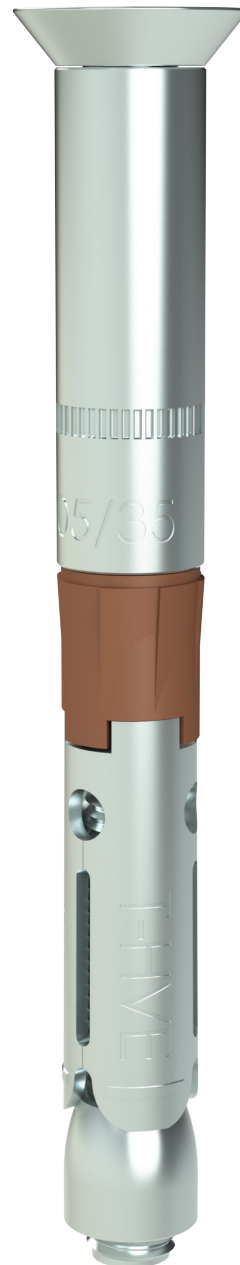
FEATURES & BENEFITS

- Ideal for safety critical & complex load case applications.
- Intended working life of 50 years.
- Comprehensive range from M6 to M12.
- Highest ETA rating (Seismic C2) for all anchor sizes.
- Fire rating to 120 minutes for all anchor sizes.

APPLICATIONS/TRADES

- Structural steel connection to concrete.
- Crane rails.
- Elevator guide rails.
- Machinery hold down.
- Plant room equipment hold down.

COMPLIANCE



Countersunk head is ideal for public access spaces



Product information on each anchor



Expansion sleeve & conical nut designed for long term resistance to dynamic load cases



AS5216



SAFETY ANCHOR COUNTERSUNK HEAD

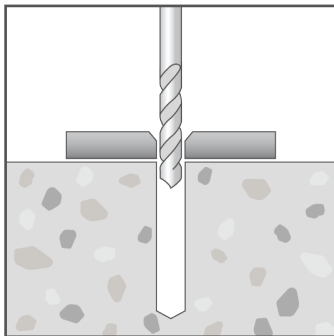
NCC COMPLIANT | AS5216 CONFORMING

RANGE

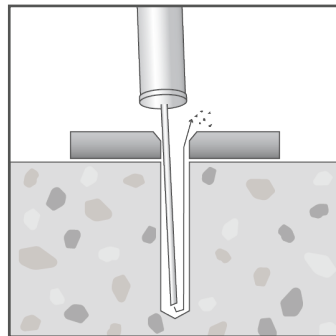
Product Code	Pack Qty	Thread size	Anchor length (mm)	Drill hole Ø (mm)	Drill hole depth (mm) @ t _{fix, max}	Minimum concrete thickness (mm)	Maximum fixture thickness (mm)	Fixture clearance hole Ø (mm)
			l_t	d_o	h_1	h_{min}	$t_{fix, max}$	d_f
AHVE0310085	50	M6	85	10	80	110	20	12
AHVE0310105	50		105				40	
AHVE0310125	50		125				60	
AHVE0312085	50	M8	85	12	90	120	15	14
AHVE0312105	25		105				35	
AHVE0312125	25		125				55	
AHVE0316110	20	M10	110	16	100	140	30	18
AHVE0316130	20		130				50	
AHVE0318120	10	M12	120	18	120	180	20	20
AHVE0318140	10		140				40	

Note: For a fixture thickness (t_{fix}) that is less than the ($t_{fix, max}$) value tabled above:
 - increase both the drill hole depth (h_1) & concrete thickness (h_{min}) by ($t_{fix, max} - t_{fix}$ actual)

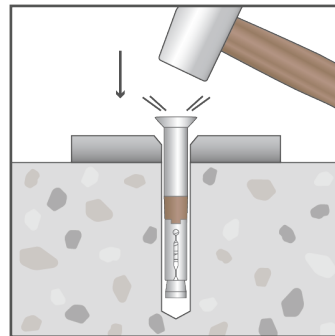
INSTALLATION



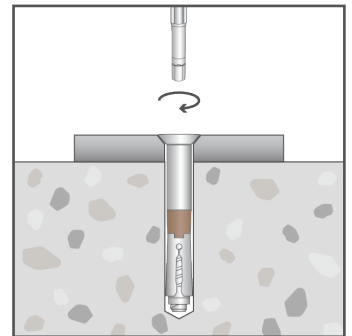
Drill hole through fixture into substrate to the specified diameter and depth



Clear hole of drilling debris.



Insert anchor into hole and drive until anchor is flush with the surface of the fixture.



Using a driver bit, expand anchor by tightening to the specified installation torque.

SAFETY ANCHOR COUNTERSUNK HEAD NCC COMPLIANT | AS5216 CONFORMING

PRODUCT INSTALL & PERFORMANCE INFORMATION

Product Code	Anchor length (mm)	Maximum fixture thickness (mm)	Drill hole depth @ t _{fix, max} (mm)	Minimum concrete thickness (mm)	Hex Allen key size AF (mm)	Installation torque (Nm)	Design Capacities	
							Uncracked concrete - tension (kN)	Uncracked concrete - shear (kN)
	I _t	t _{fix, max}	h ₁	h _{min}	H	T _{inst}	N _{Rd}	V _{Rd}
AHVE0310085	85	20	80	110	4	15	10.7	11.0
AHVE0310105	105	40						
AHVE0310125	125	60						
AHVE0312085	85	15	90	120	5	30	13.0	17.2
AHVE0312105	105	35						
AHVE0312125	125	55						
AHVE0316110	110	30	100	140	6	50	16.3	29.7
AHVE0316130	130	50						
AHVE0318120	120	20	120	180	8	100	28.5	40.0
AHVE0318140	140	40						

Note: Concrete cylinder compressive strength = 32MPa.
 Single anchor capacity - no nearby edge, minimum recommended concrete thickness.
 For combined load cases (tension & shear) - must also comply with $(N^* / N_{Rd}) + (V^* / V_{Rd}) \leq 1.2$.

Important Disclaimer: Product performance information contained herein is based on ETA certificate data and AS5216:2021 inputs as appropriate. Capacity information is limited to very simple load case configurations and is provided to enable a relative comparison within and across product ranges. The design of an anchoring solution for a particular application should be conducted by an appropriately qualified design professional.