

# Masonry Screw Anchors

## GALVANISED

### Application

Bremick® Masonry Screw Anchors are designed for fixing to concrete, brick and masonry substrates. They are an ideal masonry fastener for fixing post support base plates to existing concrete slabs. The Bremick® post supports base plates accommodate either M10 or M12 Masonry Anchors.

### Advantages

Bremick® Masonry Screw Anchors provides numerous benefits including:

- Self-tapping thread.
- Close to edge fixing – non expansive.
- Removable.

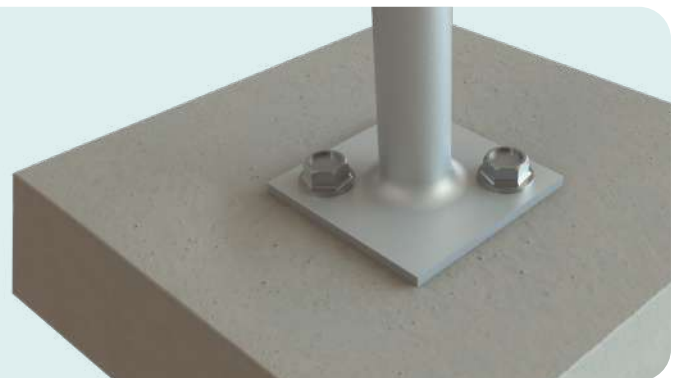
### Bremick® Ranging

Product Code	Dimensions	Coating	Pack Qty
ASBMG101004	Masonry Screw Anchor Gal M10 X 100	Galvanised	50
ASBMG101504	Masonry Screw Anchor Gal M10 X 150	Galvanised	20
ASBMG121004	Masonry Screw Anchor Gal M12 X 100	Galvanised	50
ASBMG121504	Masonry Screw Anchor Gal M12 X 150	Galvanised	20



## Installation Instructions

When fixing close to the edge of the concrete slab setback post support at least 75mm from the edge.



1

Mark out required fastener location.

2

Drill hole into base material to depth 20mm greater than the anchor length.

3

Blow out dust and drilling fragments.

4

Place post anchor base plate over the drilled holes.

5

Place anchor through the hole of the post support base plate and at the entry point of the drilled hole in the concrete.

6

Using an appropriate socket, drive the anchor into the base material with slight downward force until tight.